

B/S/H/

Digitalization as crucial enabler for future production

—

i4.0@BSH

2022-07-21
Florian Karl (GPD-BED)



- Strategy i4.0@BSH
- Organization of i4.0@BSH
- IT Architecture and exemplary solutions
- People and enablement



Vision



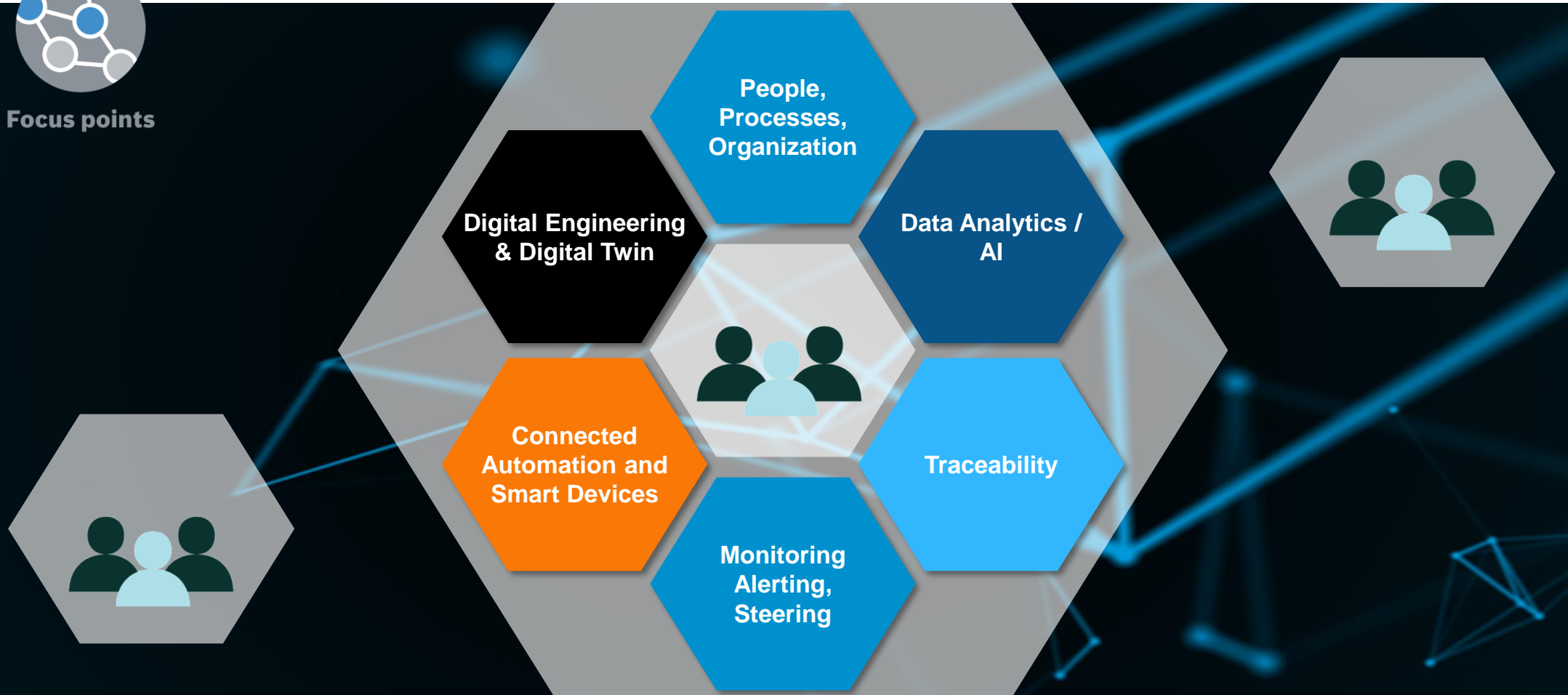
**i4.0@BSH drives the
digital transformation
to a competitive and user centric
smart manufacturing
boosting operational excellence
across all value streams*.**

i4.0@BSH – Focus Points

i4.0@BSH is based on 6 Focus Points to drive digitalization

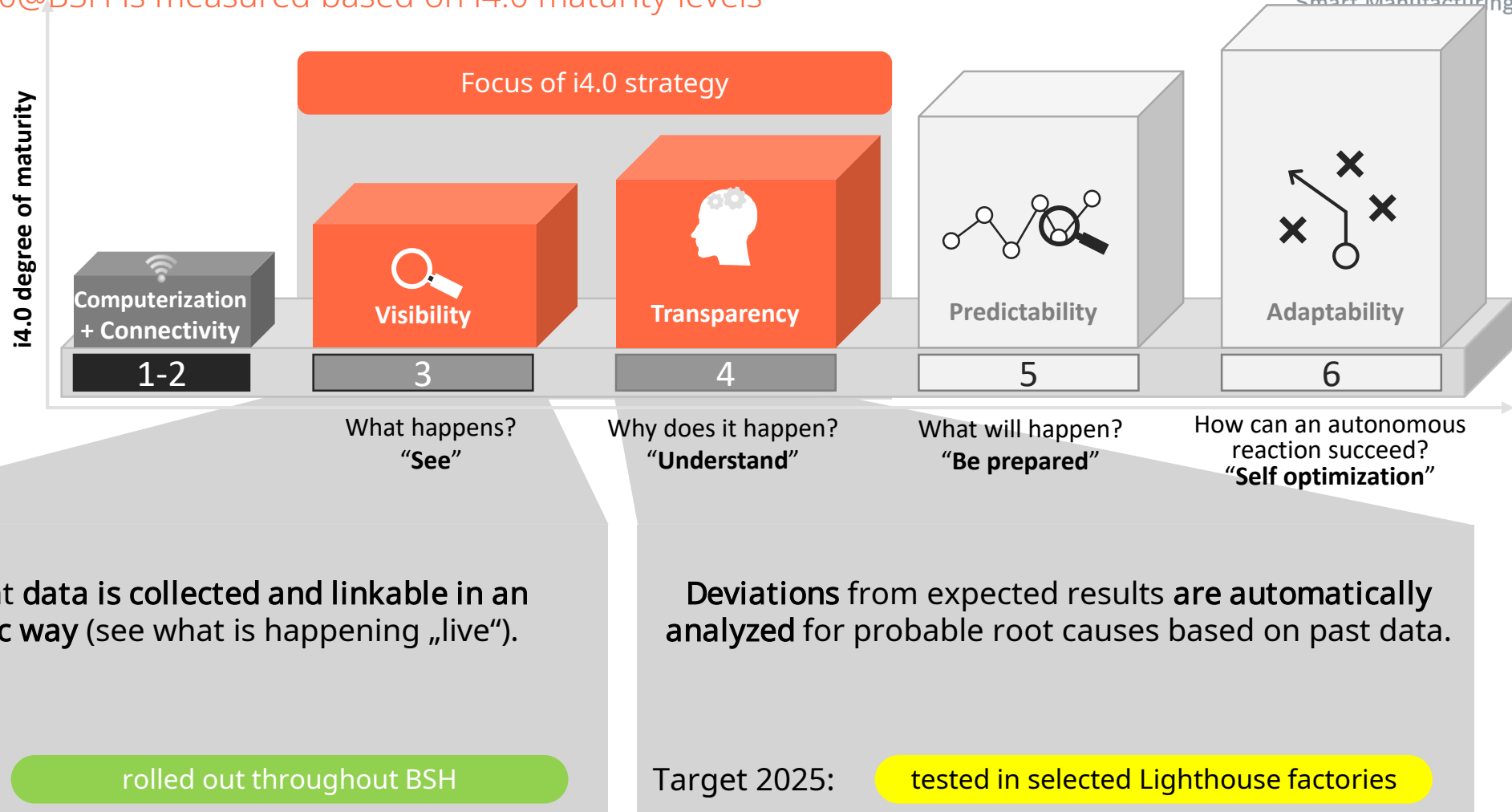


Focus points



i4.0@BSH – Progress Measurement

Progress of i4.0@BSH is measured based on i4.0 maturity levels*



How are i4.0@BSH and BPS@BSH connected?

i4.0@BSH increases in BPS transparency and provides solutions for continuous improvement

Transparency

Data Analytics



Condition Monitoring Syst.



Tool Mngt. / IoT Gateway



Prod. Perfor. Manager (PPM)



...

Improvement

Fleet Mgt. Intralogistics



Mobile Plant Maintenance



Digital Support for Workers



Digital Cobots Planning



...

BPS System CIP Approach



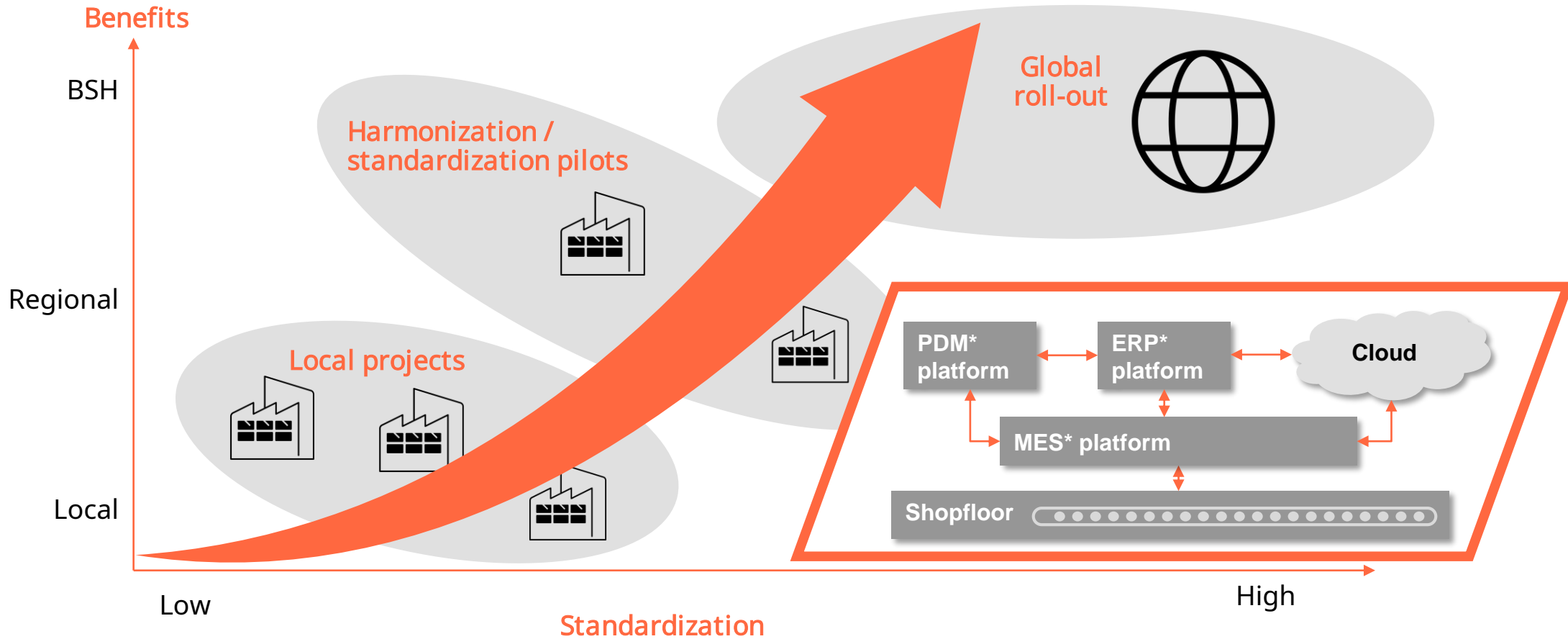
[illegible]

XXX	
XXX	
XXX	XXX
XXX	
XXX	
XXX	
XXX	XXX
XXX	
XXX	
XXX	XXX
XXX	
XXX	XXX
XXX	
XXX	
XXX	

The diagram illustrates a vertical arrangement of 12 gray rectangular blocks, each containing three dots. These blocks are organized into four groups of three, with each group enclosed in a red rectangular box. To the right of the main stack is a long, narrow gray vertical bar. Below the main stack are two additional horizontal bars: a solid orange one and a light orange one, both containing three dots.

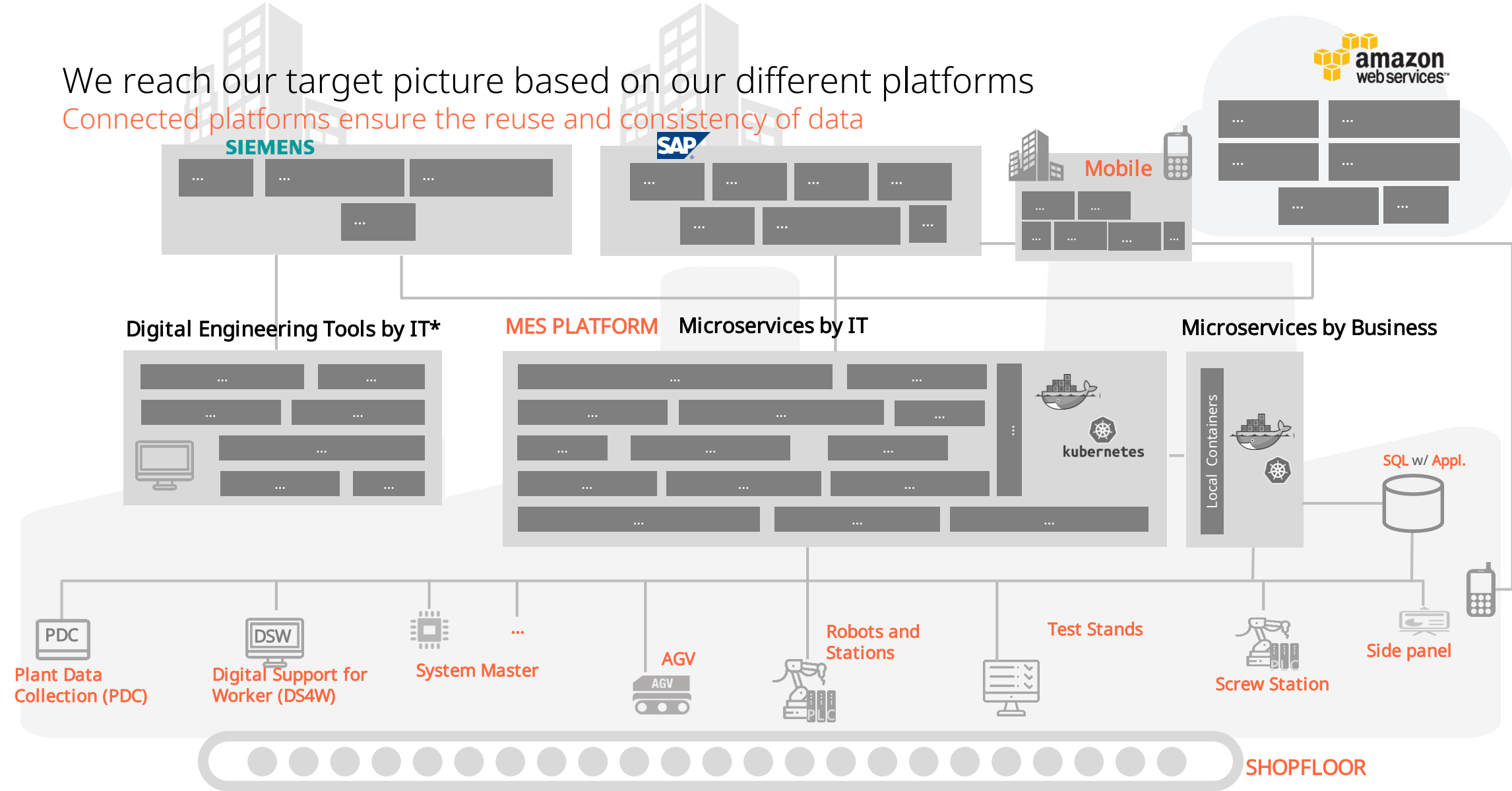
We reach our target picture based on our platform strategy

Successful local activities are standardized for beneficial scaling



We reach our target picture based on our different platforms

Connected platforms ensure the reuse and consistency of data



Digital Engineering @ BSH

Powerful system integration where we describe our plants and products in one central system

Product Development



SIEMENS Teamcenter Manufacturing Digital Twin

Change and
Release

Parameter
Factory Structure
Work Instructions
Documents

Architecture
Modeler



Abstract & Dynamic Simulation



Material Flow Simulation



Robot Simulation & Programming



VR Integration



Ergonomics

Modell Authoring

Advanced Modelling

Line
Designer



3D Line Design

AutoCAD

Dimensioning



Factory Layout

Equipment
Management



Tool Data
Management

Resources /
fixtures

PGL / Prokon



MTM Analyses



Line Balancing

EAWS
Ergonomic
Assessment



Digital Support for Workers (DS4W) & Augmented Assembly Assist (A³)

Huge value due to connected systems and re-use of data

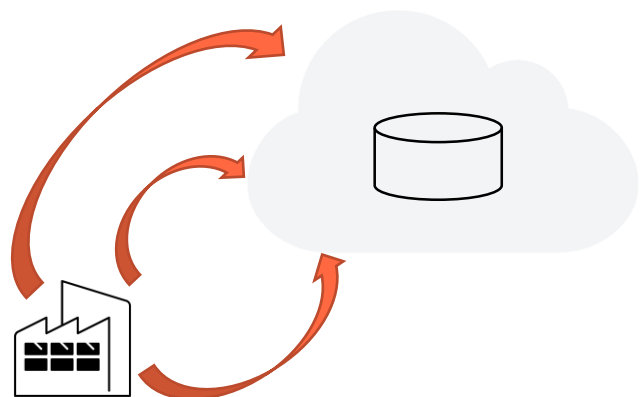
DS4W as standard tool in numerous BSH factories

A³ developed in BSH i4.0 Lighthouse Factory Dillingen

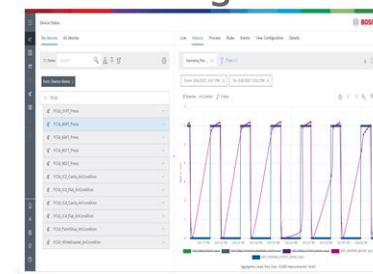


Analytics Platform in Cloud with advanced analytics at scale

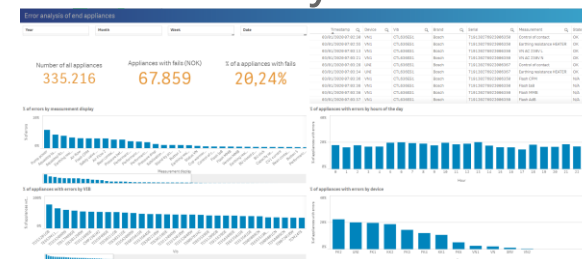
For analytics at scale & data driven decisions analytics pillars access same data fed by standard pipelines



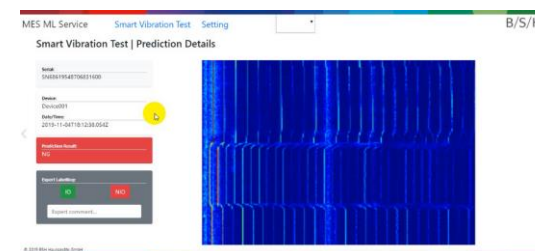
Process Monitoring



Self-service Analytics



Data Science & AI



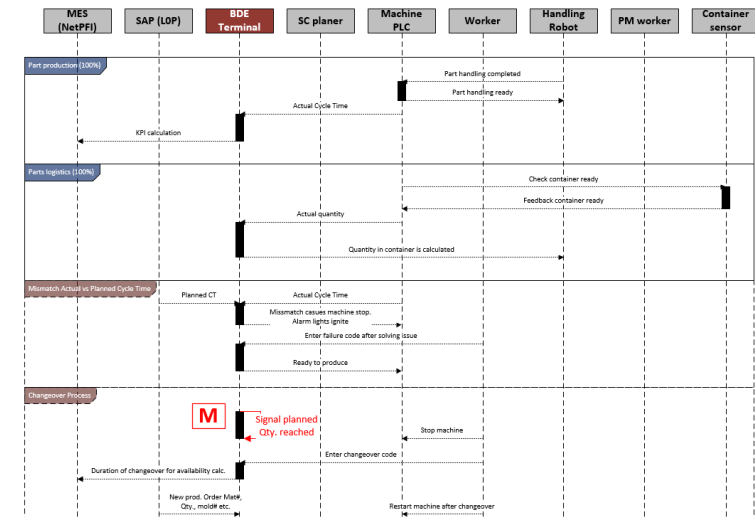
We reach full transparency of Data & Information flows in our factories

Implementation of Data & Information Value Stream (DVS/IVS) into our BSH production landscape

DVS as part of factory reporting

		Coil Buffer	Coil Cutting	Coil Buffer	Pressing
		QF number Material number Weight Material feeding Material parameters	QF number Material number Energy consumption Weight parameter hydraulic unit	QF number Material number Weight	QF number Order Material number Number of strokes Energy consumption Press force Quantity Downtime pressing Dimension parts Hole pattern Press force Acceleration Energy hand/part
New Digital	Paper	A		A	
	QR - / Barcode	A		A	
System Storage	Employee				
	Excel				
	SAP				
	MES Newseed				
	MES Platform				
	Vendorware				
	SQL-Database				
	Powermanager				
	Active Workspace				
	Team Center PDM				
Shopfloor Storage	Consenses				
	Sensor				
	RFID				
	IPC				
	PLC				
	PDC				
	WinCC				
	PPM				
	Unidat				
	SystemMaster				
	-				
	Grafana				

IVS (e.g. for purchasing of equipment)



People are a key Focus Point of i4.0@BSH

Skilling up to maximize the full potential is driven via the global multipliers network

„i4.0 Driver“

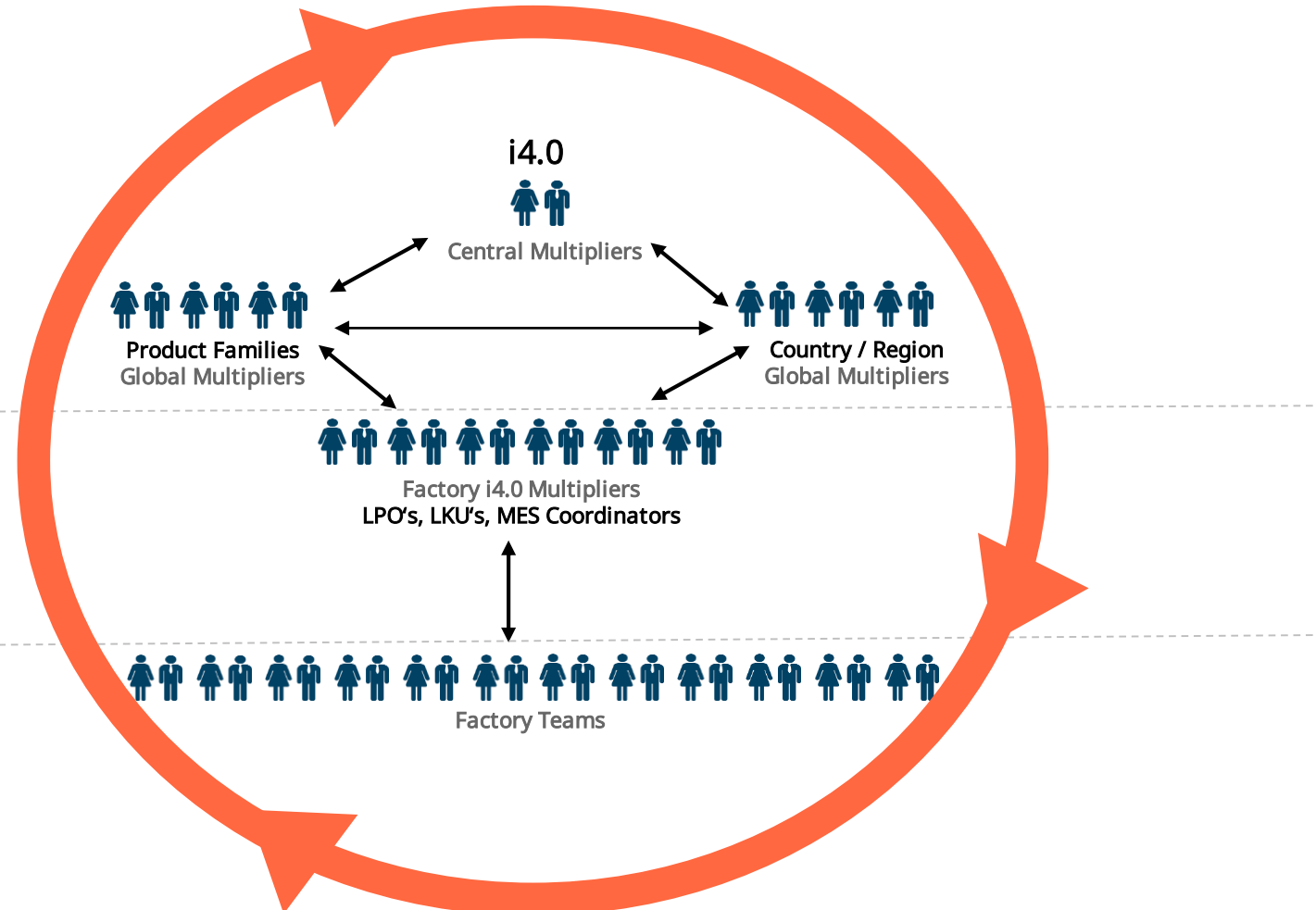
Drive modernization of factories with i4.0

“i4.0 Implementer”

Define & implement i4.0 solution

“i4.0 user”

Work in an i4.0 environment



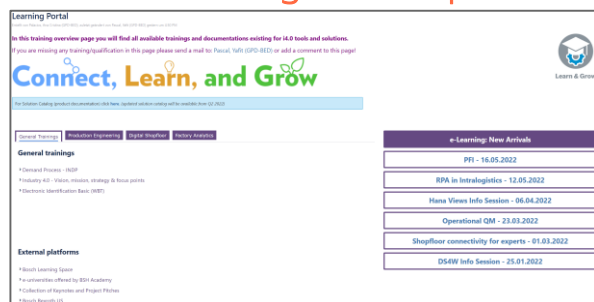
People are a key Focus Point of i4.0@BSH

Numerous global / local enablements are provided

Global focus, e.g.

„general“ enablement

Common trainings and “topic talks”



i4.0 Learning Portal und Calendar



Creation of Learning Journeys



Local focus, e.g.

Enablement of local requirements (e.g. specific techs.)

InnoLabs



Specific trainings

