

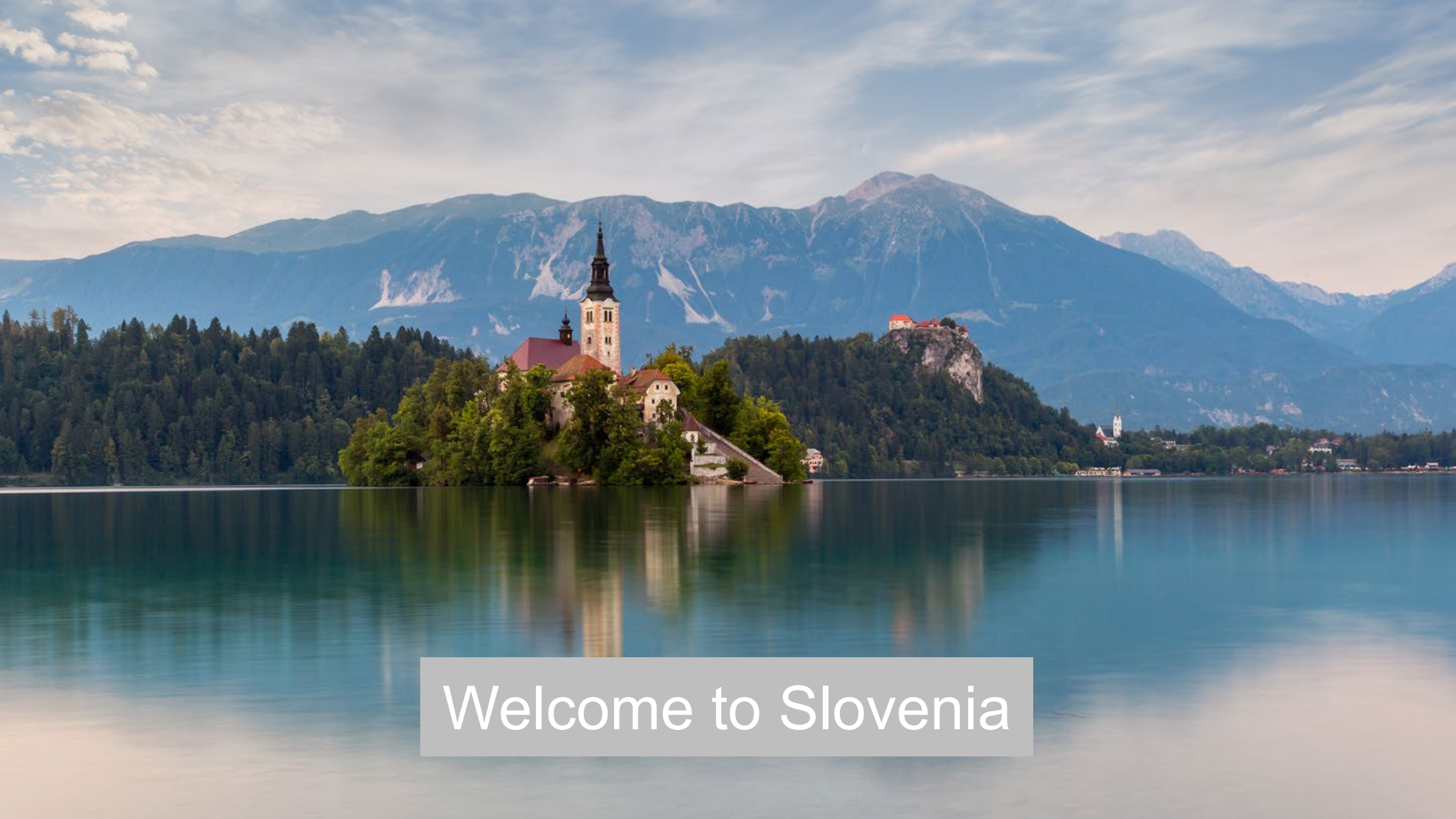


BSH Home Appliances Group

B/S/H/

Home of Hardware+

2020-11-11
Matija Petrin



Welcome to Slovenia



Population

2.100.000

Area

20.000km²

GDP per capita, 2019

23.200€

Export share in GDP

84%

Top export markets:

- Germany (19.7%)
- Italy (12.3%)
- Croatia (9.1%)
- Austria (7.1%)
- France (5.8%)

Top export products:

- Vehicles (15.0%)
- Medicaments (14.8%)
- Electrical mach. (8.9%)
- Industrial mach. (4.9%)
- Products of steel (4.1%)

Gross salary

1.820€



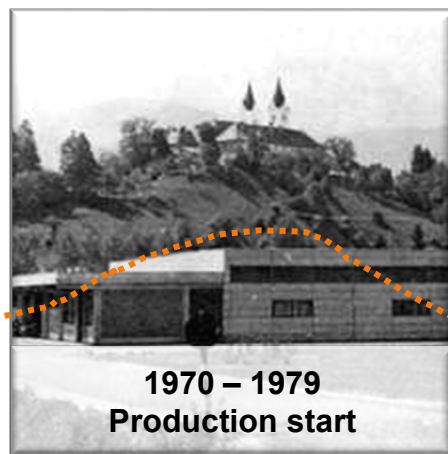
Welcome to BSH Nazarje

50 years of tradition inspires for the future



50
YEARS OF
LOCATION
NAZARETH
1970 - 2020

1970



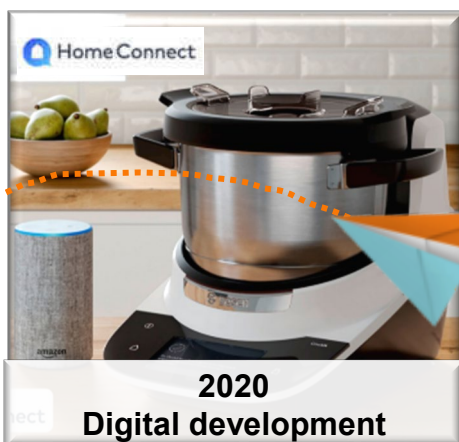
1970 – 1979
Production start



1980 – 1989
Sustainable growth



1990 – 1999
Became a part of BSH family



2020
Digital development

2019

7 mio units
1.500 employees



2009 – 2019
Rapid development



2000 – 2008
Looking for opportunities

2000

3 mio units
600 employees

B/S/H/

Location in numbers



36.000 m²

Production : 12.400 m²
Inbound WH: 12.000 m²
Outbound WH: 4.400 m²
Social & Offices: 7.200 m²



450 White collars

1200

Blue collars



135

People in R&D

181

Patents for innovations
between 2007-2019



Produced appliances
every day

>35.000



23

Assembly lines

250

Suppliers



27

Injection
molding
machines

B/S/H/

Category Food

Production quantity 2019:
5.3 mio pcs



Kitchen experts



Kitchen Machines



Food Processors

Smart essentials



Hand Mixers



Stick Mixers

Fully Automatic Coffee Machines



Category Beverage

Production quantity 2019:
1.6* mio pcs

Built-in Fully Automatic Coffee Machine



* with Coffee grinder

B/S/H/



- ✓ Value Stream organization
- ✓ Productivity program
- ✓ Paper free - digitalization

- ✓ System CIP
- ✓ Smart automation i 4.0
- ✓ SFM 2.0

- ✓ Production flexibility
- ✓ Individualization – M2O
- ✓ New product ramp up

- ✓ Our people
- ✓ Society
- ✓ Environment

LEAN

Only a LEAN factory
can be a LEAD factory.



OPERATIONS

Just good is not enough
in operations.



VALUE

We are committed
to create value.

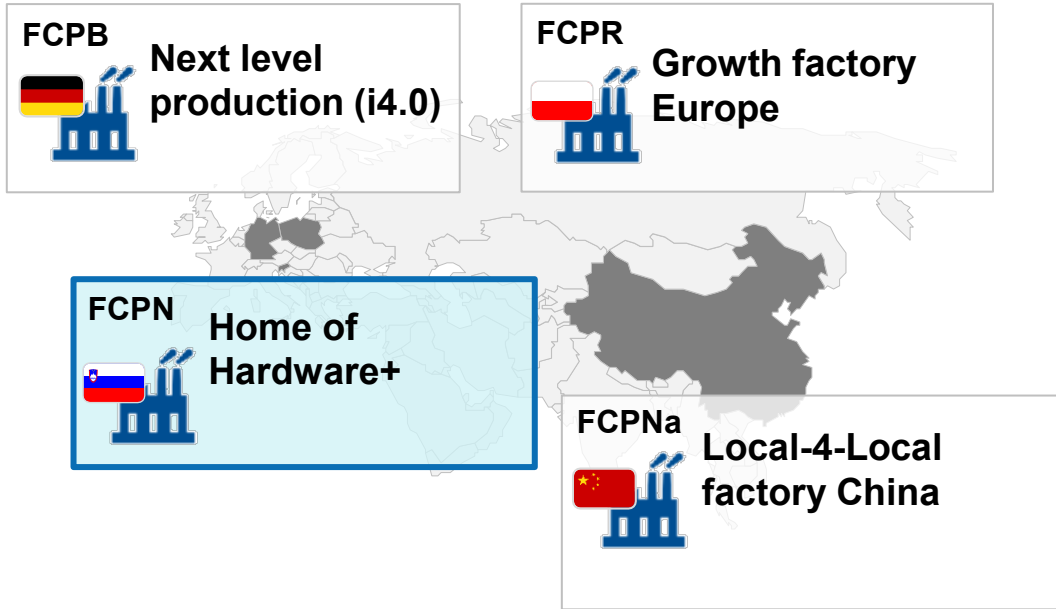


RESPONSIBILITY

We are responsible.



The Role of Nazarje Factory within PCP



Reliable & flexible (product, processes, people)
competence partner, focused on smart, lean manufacturing
of **high-tech, connected & premium SDA products** for
driving PCP to Hardware+





Love⁺

Concentration on connected & premium products

BEVERAGE



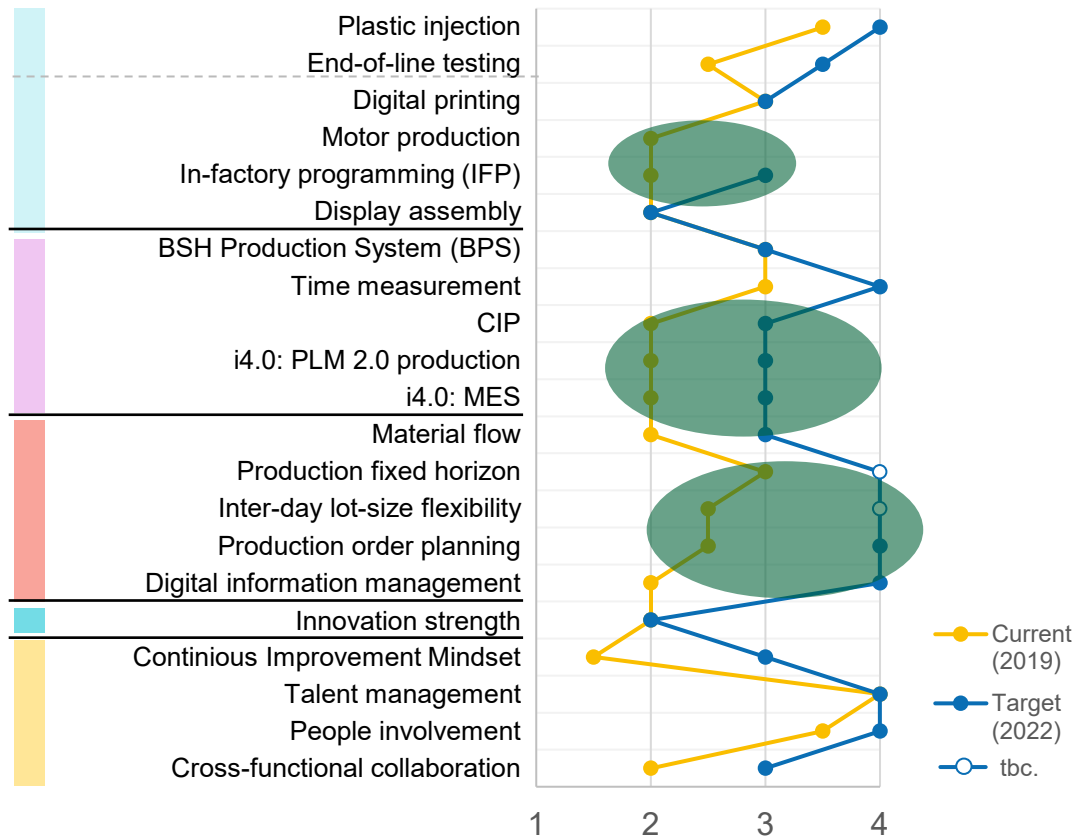
FOOD



B/S/H/



Love⁺ FCPN drives competences⁺



■ Competence Manufacturing (core) technologies
■ Competence level of methods

■ Level of process efficiency
■ Innovation Strength (methods, processes, technologies)

■ Maturity level of People Development, Collaboration and Culture

Key implications

Products - Technology fields:

- IFP Systemmaster & Bluetooth
- Connected End-of-Line Testing
- Digital printing (inkjet, laser)

Processes - Lean & BPS:

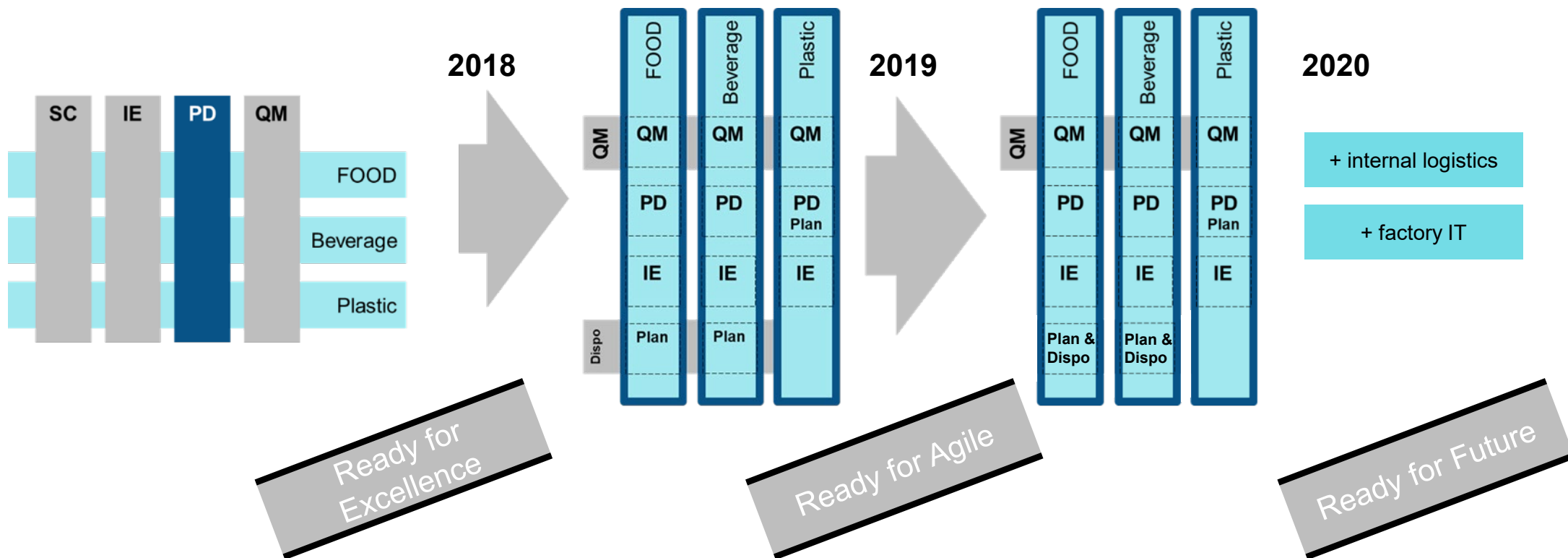
- E2E Value Stream management
- Levelled production
- lean@ Internal logistics (AGVs,...)
- Process excellence (DEP,..)

Tools&Enablers - i4.0@FCPN:

- PLM2.0, MES
- digital worker support
- Artificial intelligence solutions



Love⁺ FCPN drives Organization +





Love⁺ FCPN drives i4.0+





Love⁺ Sustainability & Environment



Energy
efficiency

24% reduction
in last 5 years



New
Clean Power



1Mw PV 01/2021

8% self
production



Procure green
electricity

100%



FCPN is Carbon neutral
Factory

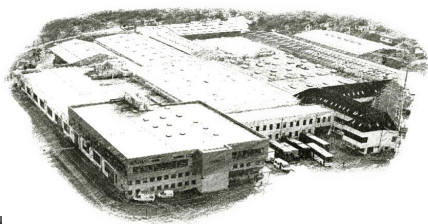


B/S/H/



Love⁺

We feel responsible for Employees & Society



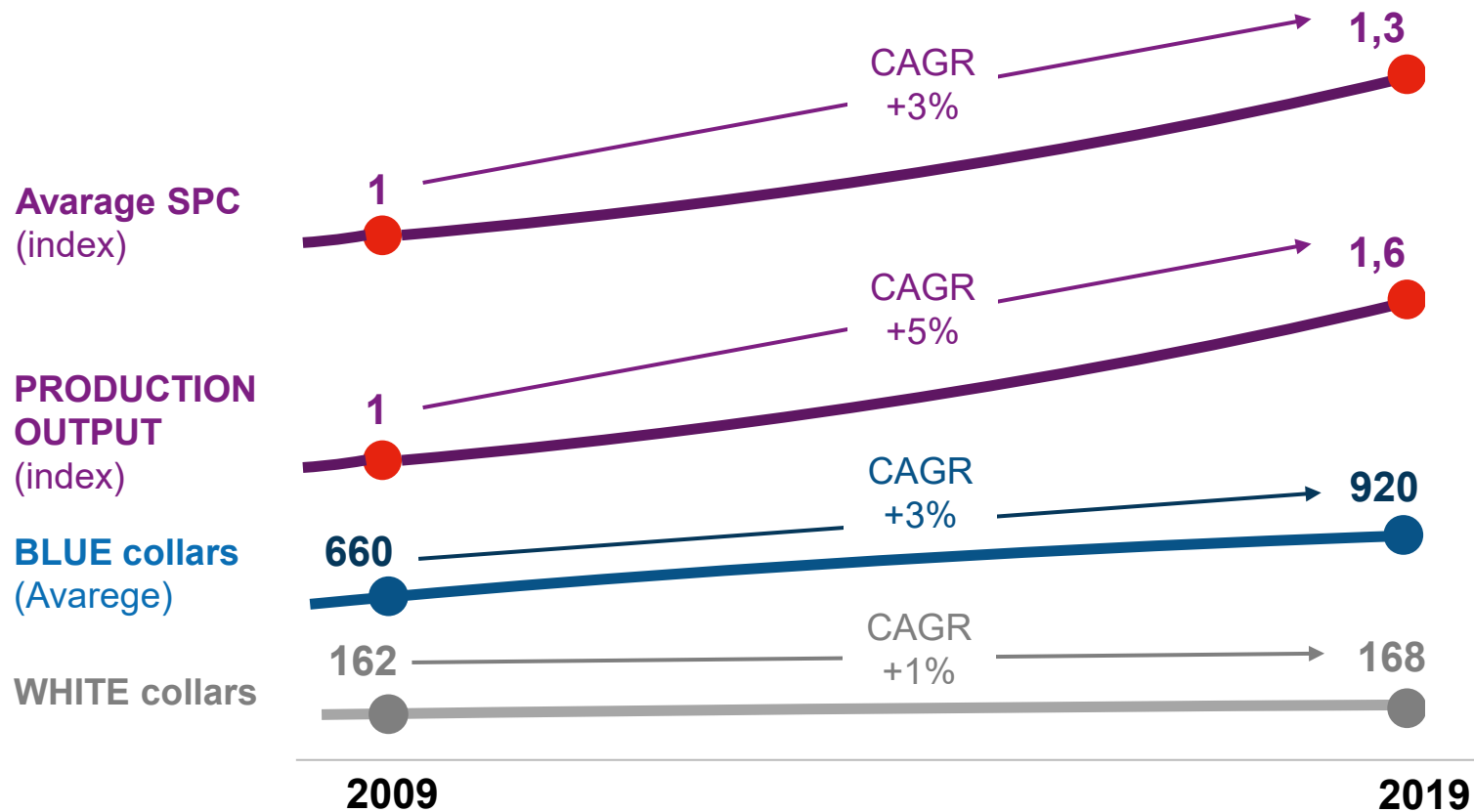
50
YEARS OF
LOCATION
NAZARJE
1970 - 2020



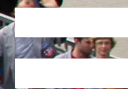
B/S/H/



Love⁺ FCPN drives future⁺



Flexible
Curious
Passionate
inNovative



50
YEARS OF
LOCATION
NAZARJE
1970 - 2020

FCPN
The Factory



B/S/H/

A photograph of a modern glass skyscraper. Large, dark, three-dimensional letters spelling 'B/S/H/V' are mounted on the glass facade. The letters are slightly out of focus, and the background shows reflections of other buildings and the sky. In the lower part of the image, two people are visible on a balcony or walkway, looking out. A blue banner with the text 'Thank you!' is overlaid on the bottom left.

B/S/H/V

Thank you!